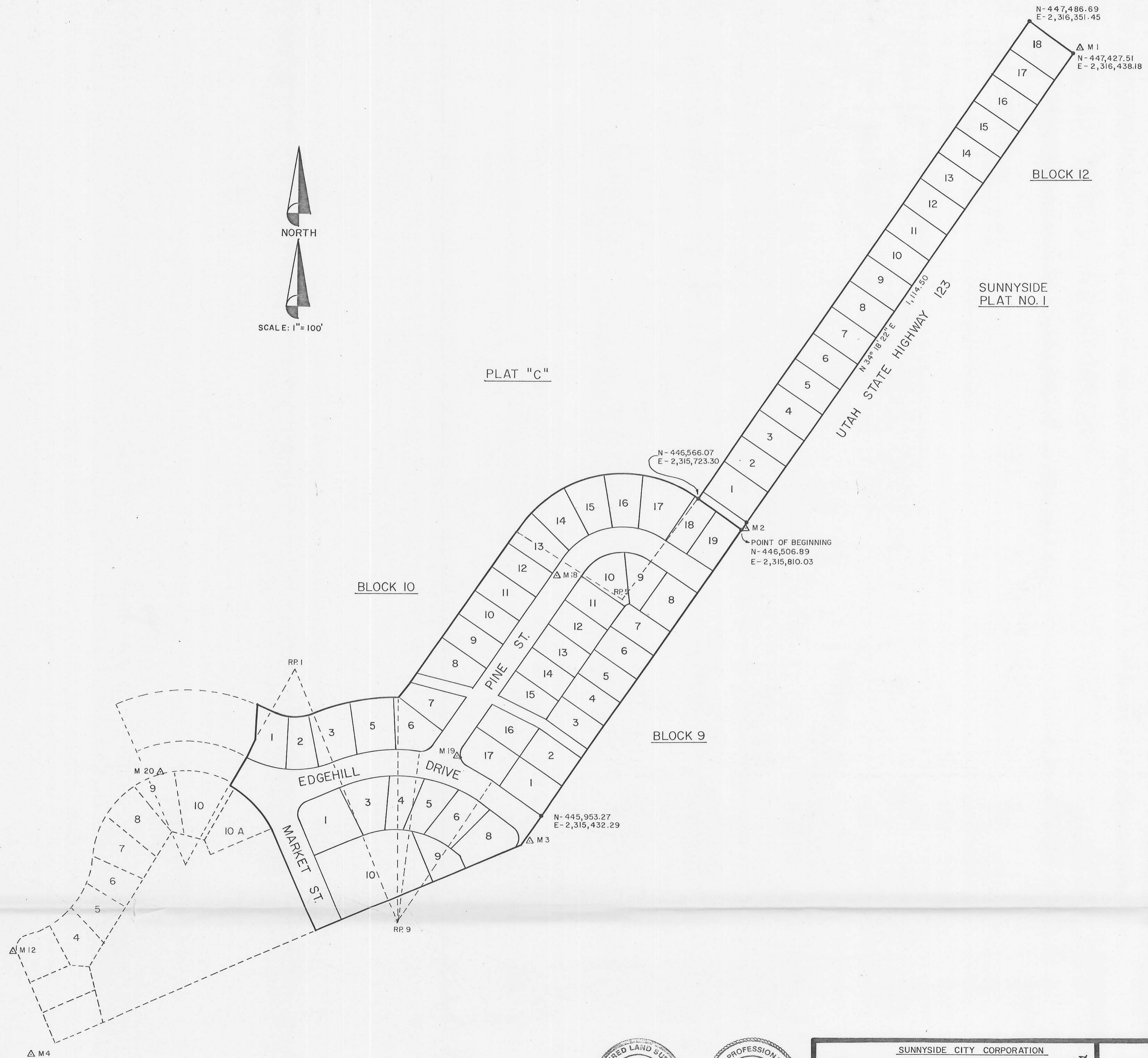
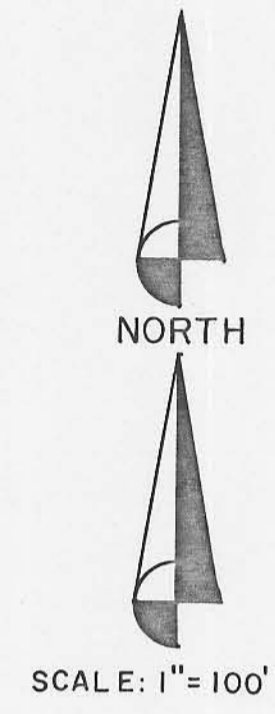


Entry No. 020000  
 Indexed   
 Abstracted   
 Recd. Fee

175



- NOTE -1 THIS DRAWING IS TO BE WORKED WITH THE SUNNYSIDE SUBDIVISION PLAT "C" RECORDED AT THE CARBON COUNTY COURTHOUSE. RECORDED ON APRIL 19, 1977; BOOK 3 OF PLATS, PAGE 165. ALSO SUNNYSIDE NO. 1 - PLAT RECORDED AT THE CARBON COUNTY COURTHOUSE ON APRIL 19, 1977; BOOK 3 OF PLATS, PAGE 167.
- NOTE -2 BASIS OF BEARING IS THE UTAH STATE PLANE COORDINATE SYSTEM AS ESTABLISHED BY THE CARBON COUNTY SURVEYORS OFFICE: N 0° 07' 36" W BETWEEN THE WEST 1/4 CORNER OF SECTION 6 AND THE NORTHWEST CORNER OF SECTION 6, T. 15 S., R. 14 E., S.L.B. & M.
- NOTE -3 THE APPARENT BEARING USED ON THE RECORDED PLATS WAS N 0° 35' E BETWEEN THE WEST 1/4 CORNER OF SECTION 6 AND THE NORTHWEST CORNER OF SECTION 6, T. 15 S., R. 14 E., S.L.B. & M.
- NOTE -4 ROTATE BEARINGS 0° 42' 36" COUNTERCLOCKWISE ON THE RECORDED PLATS TO CORRESPOND WITH THE UTAH STATE PLANE COORDINATE SYSTEM.
- NOTE -5 THE STATE PLANE COORDINATES SHOWN ARE PROJECT DATUM COORDINATES AND NOT SEA LEVEL DATUM COORDINATES.
- NOTE -6 THE RECORDED SUBDIVISIONS ARE LAID OUT AND MEASURED FROM THE EAST 1/4 CORNER OF SECTION 1; T. 15 S., R. 13 E., S.L.B. & M., INSTEAD OF THE WEST 1/4 CORNER OF SECTION 6, T. 15 S., R. 14 E., S.L.B. & M. AS SHOWN ON THE RECORDED PLATS.

POINT	NORTH COORDINATE	EAST COORDINATE
Control Monument No. 1	447,434.47	2,316,446.23
" " No. 2	446,505.81	2,315,811.93
" " No. 3	445,900.86	2,315,405.72
" " No. 4	445,490.95	2,314,450.93
" " No. 12	445,692.42	2,314,416.06
" " No. 13	445,069.40	2,314,896.16
" " No. 18	446,411.27	2,315,451.68
" " No. 19	446,067.45	2,315,261.92
" " No. 20	446,018.80	2,314,660.68
West 1/4 Corner Sec. 6	444,877.77	2,310,760.69
East 1/4 Corner Sec. 1	444,941.03	2,310,760.54
Radius Pt. for Curve No. 5	446,357.87	2,315,584.86
Radius Pt. for Curve No. 9	445,753.43	2,315,151.78
Radius Pt. for Curve No. 1	446,212.90	2,314,954.56

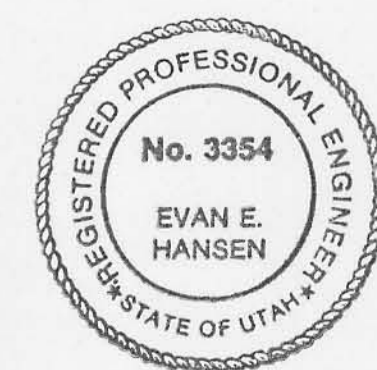
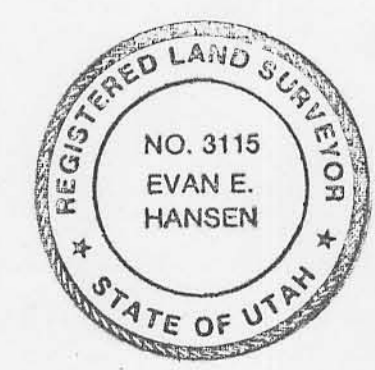
Monument No.	Bearing and Distance	To Corner	Lot No.	Block No.
No. 1	S 49° 09' 12" W 10.64'	SE	18	12
No. 2	N 27° 52' 22" E 19.44'	SW	1	12
No. 3	N 26° 52' 54" E 58.75'	SW	1	9
No. 4	N 63° 35' 28" E 54.79'	SW	1	7
No. 12	S 28° 55' 35" E 74.52'	SW	3	7
No. 13	N 8° 43' 54" E 666.62'	SE	10 B	7
No. 18	N 38° 31' 32" W 10.35'	SW	13	10
No. 19	N 36° 46' 09" E 71.77'	NE	17	9
No. 20	N 81° 40' 46" E 40.60'	NE	8	7

△ INDICATES CONTROL MONUMENTS

**ENGINEER'S CERTIFICATE**

I, EVAN E. HANSEN, DO HEREBY CERTIFY THAT I AM A REGISTERED LAND SURVEYOR AND PROFESSIONAL ENGINEER HOLDING CERTIFICATES NO. 3115 AND NO. 3354 AS PRESCRIBED UNDER THE LAWS OF THE STATE OF UTAH. I FURTHER CERTIFY THAT I HAVE BEEN AUTHORIZED BY SUNNYSIDE CITY TO SET SURVEY CONTROL MONUMENTS AT THE LOCATIONS SHOWN ON THIS PLAT AND THEY ARE CORRECT TO THE BEST OF MY KNOWLEDGE.

Evan E. Hansen      FEB 20, 1987  
 EVAN E. HANSEN      DATE



SUNNYSIDE CITY CORPORATION  
 PRESENTED TO THE SUNNYSIDE CITY COUNCIL THIS 12<sup>th</sup> DAY OF March A.D., 1987, AT WHICH TIME THIS MONUMENTATION WAS APPROVED AND ACCEPTED.  
Tom Anderson      Clayton Heath  
 ATTEST: CITY RECORDER      MAYOR

RECORDED # 2000  
 STATE OF UTAH COUNTY OF CARBON RECORDED AND FILED AT THE REQUEST OF:  
**SUNNYSIDE CITY**  
 DATE 3/26/87 TIME 10:39 AM BOOK 4 OF PLATS PAGE 271  
Ann O'Brien  
 CARBON COUNTY RECORDER

**Empire Engineering & Land Surveying**  
 86 NORTH 200 EAST    PRICE, UTAH 84501    PHONE (801) 637-7498  
 SUNNYSIDE CITY MONUMENTATION SUBDIVISION PLAT "C" AND SUNNYSIDE NO. 1  
 Drawn By: T.H.      Approved By: E.E.H.      Drawing No. EESD-048 D  
 Date: JAN. 1987      Scale: 1" = 100'